

Feeling constrained by your
content management system (CMS)?
Docs-as-code could be a solution

André Tran
3DS OUTSCALE (Dassault Systèmes)

At first, we were using Atlassian Confluence

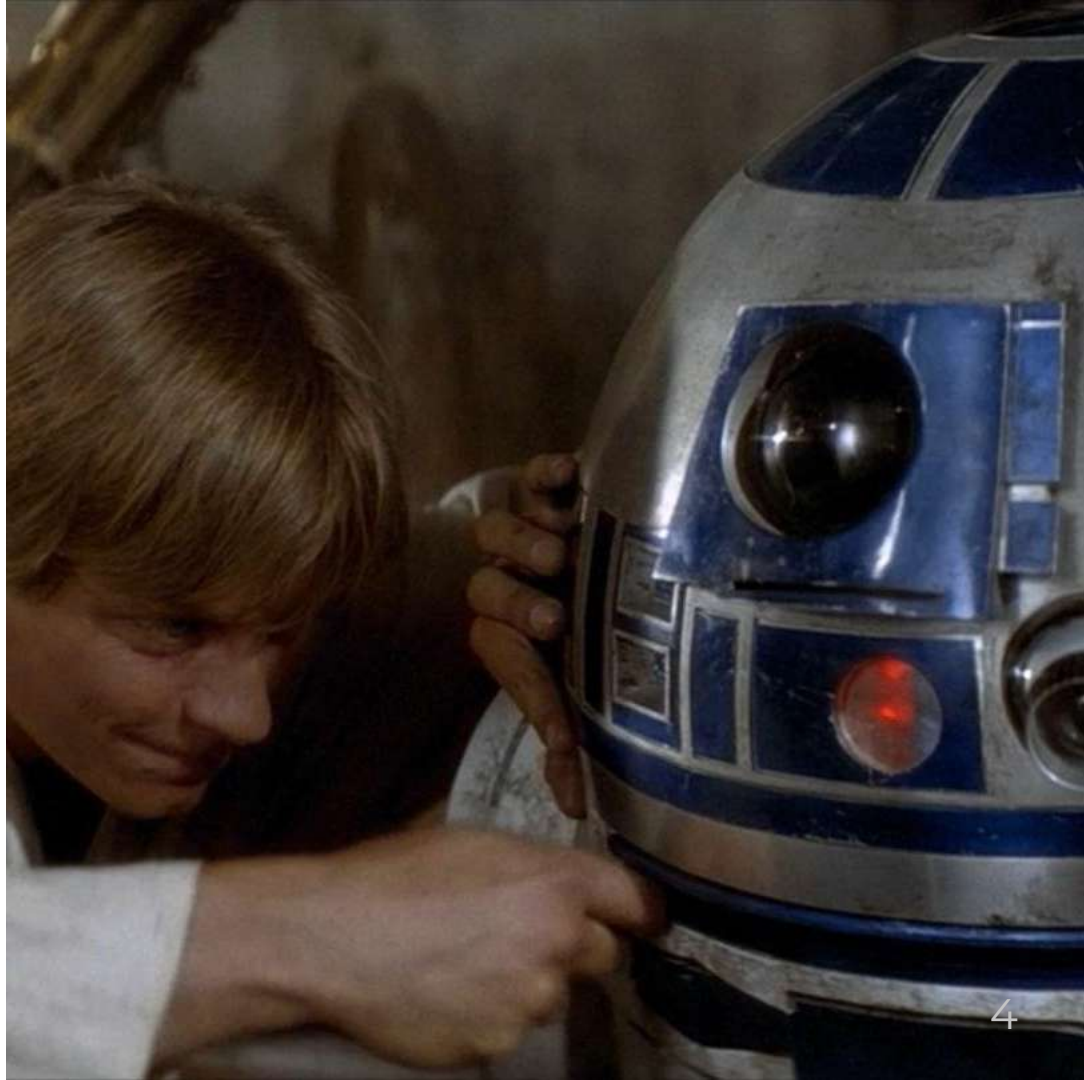
- Wiki software with a WYSIWYG interface
- A legacy choice
- Need more features? Buy plugins

What was the issue?

- WYSIWYG led to XML “tag soup”
- Mass modifications were hard
- Plugins add complexity & dependencies

These constraints meant...

- Lot of time spent on technical issues
- Accumulation of documentation debt



Let's move out of Confluence!

What we needed:

- Content reuse, conditional text, etc.
- Lightweight text format
- Version control, integration with dev sources

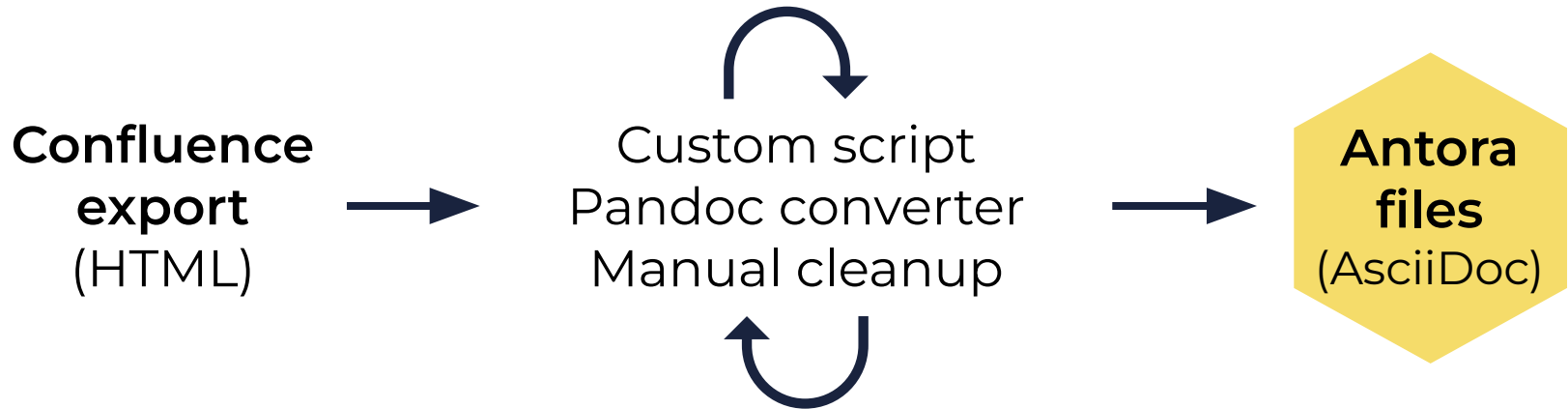
→ Docs-as-code system → **Antora**



Docs-as-code meant...

- Process benefits
- UX/branding benefits
- Financial benefits
- Security benefits
- Community benefits

How did we go from Confluence to Antora?



The main challenges are...

- Need to have a bit of a hacker's mindset
- Working on both the migration and the day-to-day work
- Planning the transition



Home

- Quickstart
- User Guide
 - Tutorial: Getting Started with the OUTSCALE Cloud
 - Cloud Tools
 - Account
 - Compute
 - Storage
 - Block Storage Unit (BSU)
 - Working with Volumes
 - Volumes User Interface
 - About Volumes
 - Creating a Volume
 - Getting Information About Your Volumes
 - Attaching a volume to an Instance
 - Initializing a Volume from an Instance
 - Detaching a Volume from an Instance
 - Increasing the Size of a Volume
 - Deleting a Volume
 - Working with Snapshots
 - OUTSCALE Object Storage (OOS)
 - Defining Block Device Mappings
 - Network and Security
 - Marketplace
- API Documentation
- Technical Guides
- Support
- FAQ

Creating a Volume

You can create volumes that you can attach to FCU instances created within the same Availability Zone. Volumes enable you to add storage capacity to an instance if the root device has reached its storage capacity limit, or to separate the storage of your data from the operating system files of instance.

Creating a Volume Using Cockpit

1. Click **Storage** > **Volumes**.

2. Click **Create +**.

The CREATE VOLUME dialog box appears.

3. In the **Name** field, type a name for the volume.

i This action adds a Name tag of 255 characters maximum. You can use any character, including accented letters.

4. In the **Size** field, type the size of the volume in gibibytes (GiB) or select it using the arrows.

w The maximum size allowed for a volume is 14901 GiB.

5. In the **Type** list, select a volume type:

- standard** for a Magnetic volume
- gp2** for a Performance volume
- io1** for an Enterprise volume

For more information about the different types of volumes, see [About Volumes > Volume Types and IOPS](#).

6. (**io1** volumes only) In the **IOPS** field, type the number of IOPS for the volumes or select it using the arrows.

w The maximum number of IOPS allowed for **io1** volumes is 13000.

7. In the **Snapshot** list, leave the **None** box checked.

i To create a volume from a snapshot, you can select a snapshot in the **Snapshot** list. For more information, see [Creating a Volume from a Snapshot](#).

8. In the **Availability Zone** list, select the Availability Zone in which you want to create the volume.

i By default, the Availability Zone A is selected.

Contents

- Creating a Volume Using Cockpit
- Creating a Volume Using AWS CLI

Related Pages

- About Volumes
- About Regions, Endpoints, and Availability Zones
- Attaching a Volume to an Instance
- Adding or Removing Tags

Corresponding API Method

- CreateVolume



What's next?

- Automatic style guide
- Detection/correction of errors in code examples
- Automatic update of data from other sources

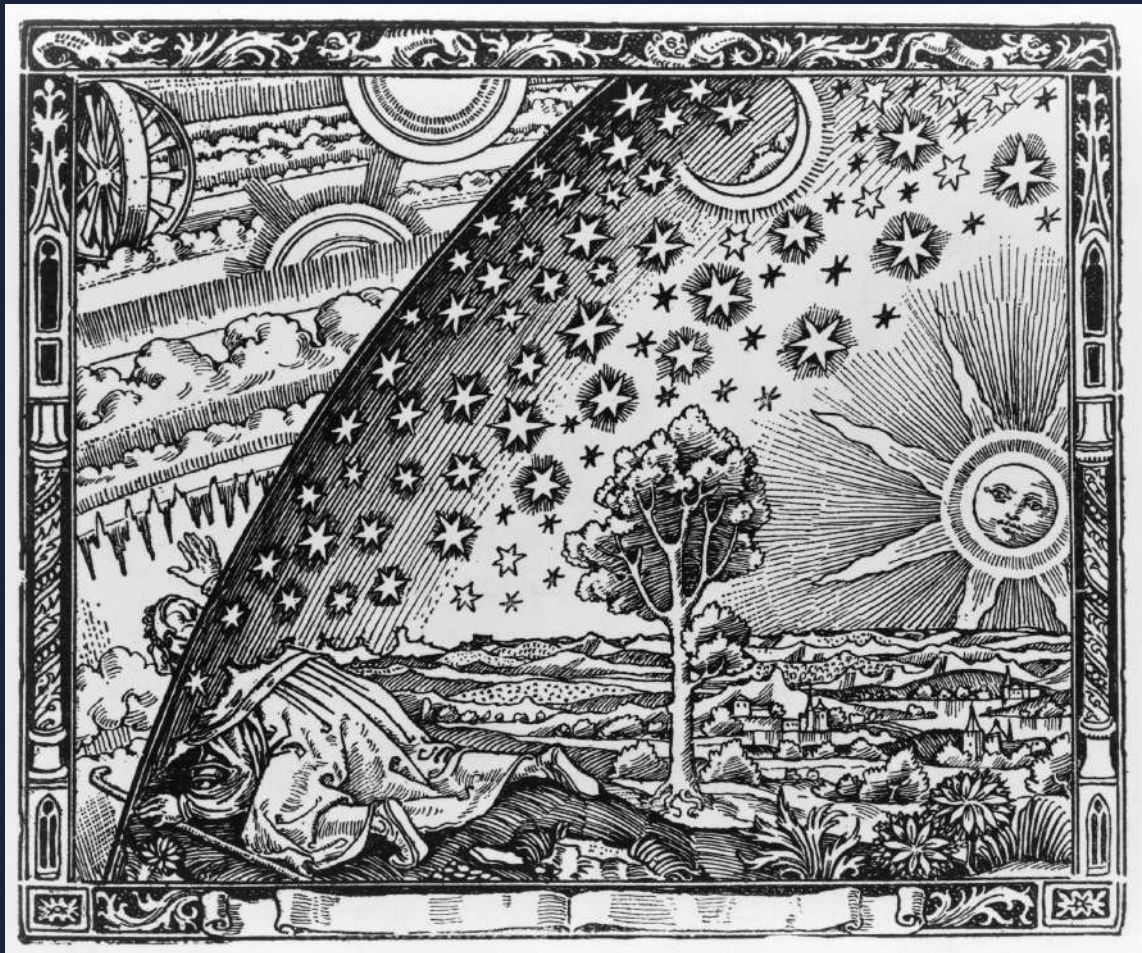
And also...

- UX improvements
- Matomo Analytics
- Feedback features



In conclusion: a rewarding journey

- For the users → State-of-the-art website
- For the company → Doc becomes a valuable product
- For the employees → Devs and TWs share the same world
- For you → Professional growth



Thank you!

andre.tran@outscale.com